

# Control Tek

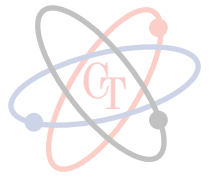
ELECTRO MECHANICAL CONTRACTING CO. LLC



## COMPANY PROFILE

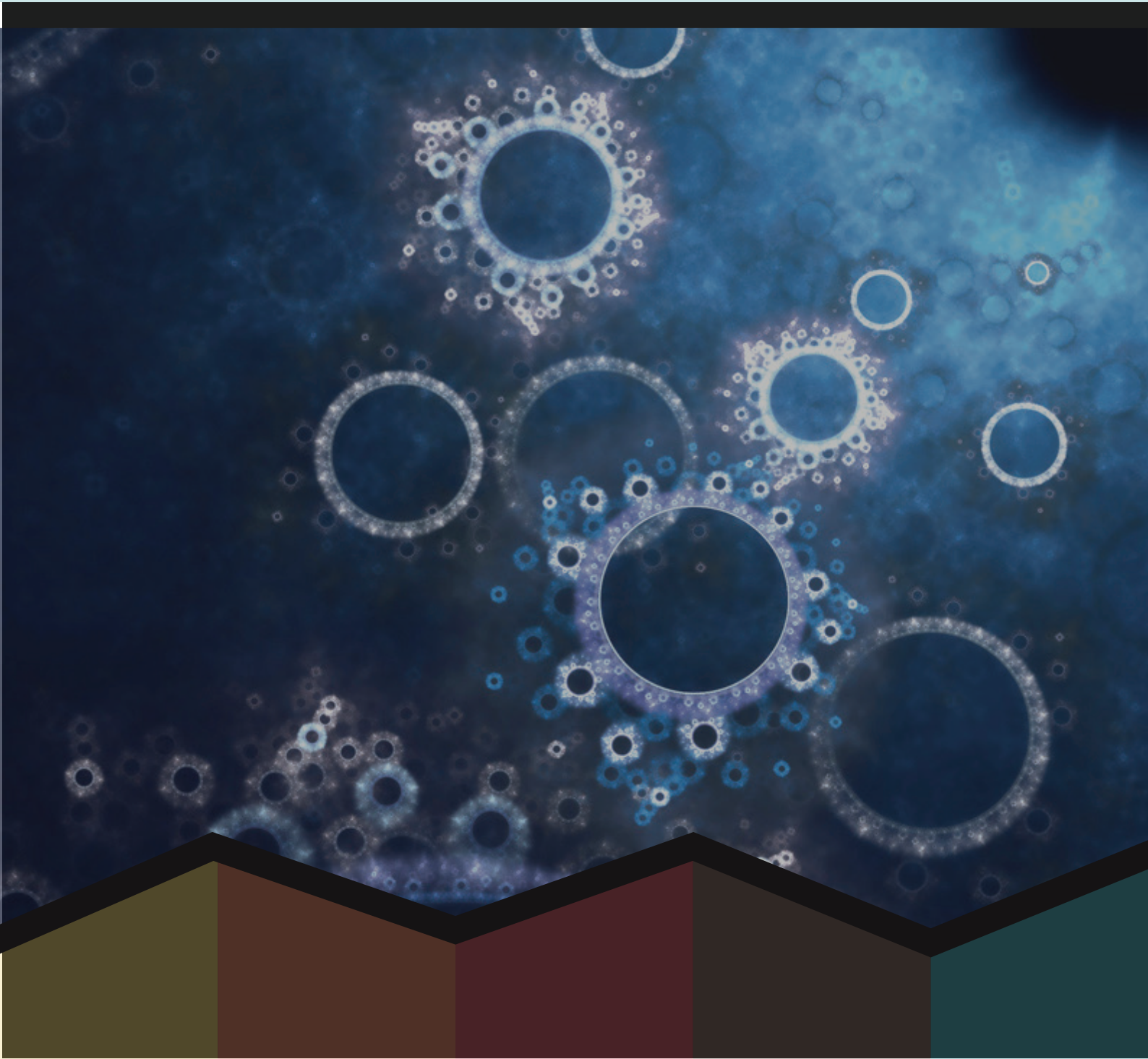
# INTRODUCTION

Control Tek



Control Tek LLC is a leading well established MEP company expense of the Agro Group at U.A.E. since 2006 and Qatar since 2011 dealing in wide range of M.E.P, and infrastructure services.

We are proud to have provided our services to many clients in small & big size projects in UAE, Qatar and other GCC countries. We create sustainable solutions and aim to be a leader in quality, work safety and business ethics. We approach each investment carried out with great care and we respect the natural environment as well as ethical principles, since we know our work has an impact on the life of generations to come. We care about our customers' satisfaction and about end user comfort





# OUR STRATEGY

## Mission

Our Mission is to create an Innovative Technical future for all. our aim is to introduce innovative and new technology of MEP by utilizing our competence and expertise

## Vision

We dream big and aim to become the leading name in UAE for MEP and construction filed. We believe we can get there by implementing our mantra of high quality services that serve nature and humans.

## Our Work

We Value customer satisfaction and make sure our entire customer get their requirements. We are flexible and leave no stone unturned in achieving excellence in all our projects.

Control Tek's team of MEPs are experienced and dedicated. They value integrity and are flexible. Our team members are all nature loving and put their best effort in environmental conservation in every projects we undertake.

## Corporate values

Customer Satisfaction

Employee Dignity and Self Respect

Technical Excellence with Professional etics

Organizational and individual Growth

Responsibility to Society



# SUSTAINABILITY

## Health and Safety

Occupational health and safety is a priority for control tek and the wider CT. CT and all its Associated Businesses are committed to providing a safe, healthy and positive working environment for all employees and those under its care. The Group aims to eliminate all class-one accidents (an accident that results in fatality or permanently alters a person's life) and to minimize, and ultimately eliminate, all lost-time accidents on sites.

## Quality

Quality management is central to all CT and CT activities. The wider Group endeavours to provide clients with a professional approach to project delivery. It is the policy of CT and CT to provide superior service to clients by understanding and responding to their needs and expectations, and to systematically manage projects to maximise value for all stakeholders.

## Environmental Management

Control Tek is aware of the impact that its work can have on the environment, and as such, environmental management forms an important element of its project management and reporting systems. CT and the wider CT adheres to an environmental policy that ensures it complies with all relevant environmental laws and regulations, takes all practicable steps to prevent pollution in its activities, and conserves resources through the efficient use of energy and materials.

## Community Relations

Control tek endeavors to minimize the impact of its work on local residents and their environment. It encourages communication and consultation with the local communities that may be affected by its work. As part of its commitment to supporting communities, the wider HLG offers financial support for community-driven initiatives that provide maximum benefit for local residents. HLS has a well-defined corporate social responsibility plan.





# OUR SERVICES

Control TEK Engineering Services offers complete MEP contracting solutions from design, supply, installation, testing and commissioning of the MEP systems that include Civil, Electrical, Fire Alarm, Low Current, Plumbing, Drainage, Fire Fighting, HVAC as per the requirement of the local authorities of the U.A.E. for commercial and residential buildings, group of villas, hospitals, shopping malls, high rise towers, infrastructure and industrial projects.

- ▶ INTERIOR CIVIL WORKS
- ▶ EXTERIOR CIVIL WORKS
- ▶ ELECTRICAL
- ▶ MECHANICAL
- ▶ MAINTENANCE

## INTERIOR CIVIL WORKS

- Interiors design
- Painting Interiors
- Adding Partitions
- Sticking Wall Papers
- Installing

## EXTERIORS CIVIL WORKS

- Paving Works
- Boundary Wall
- Tiles Works
- Fence Works
- Retaining Wall
- Drive ways
- Custom Seating Areas
- Pathway Construction
- Stone walls and Terrace



## **ELECTRICAL, MECHANICAL & PLUMBING**

- **Supply and installation of Transformers**
- **H.T. Switchgears,**
- **Cable and Termination ,**
- **Lighting and Small Power Systems that include Conduiting & Wiring, Cabling and Termination, Main Distribution Boards, Sub Main Distribution Boards, Power Factor Correction Capacitor Banks including Generator and ATS Panel**
- **Low Current Systems that include Conduiting and Wiring for CCTV, Access Control, Gate Barrier, Structured Cabling, Lighting Control, Intercom, SMATV / MATV, PABGM, etc.**
- **Bus-bar Riser Systems, Cable Tray with ladder and trunking. Supply and installation of Fire Alarm & Central Emergency Systems and UPS.**
- **Lightning Protection and Earthling Systems.**
- **Underground / Aboveground Drainage Systems that include pipes, fittings, floor drains , cleanouts, rain water outlets, catchment basins and channel gratings, sewage and storm water lifting station, etc.**
- **Domestic Cold and Hot Water Systems that include water transfer and booster pumps, water tanks, water heaters (central and domestic), cool water systems, water filtration and water treatment systems, etc.**
- **Sprinklers, fire hose reels, landing valves, pump sets, piping with valves &s; accessories, FM200 / Inergen, Deluge systems, etc**
- **Water closets, wash hand basins, bidets, bath tubs, shower trays, Jacuzzi, whirlpools etc.**
- **AC system consists of DX Type, Chilled Water system viz: Reciprocation Screw Chillers & amp; Centrifugal Chillers in the range of 100-3500 TR central plants in the Gulf Region, Chilled Water Pipes, fittings, valves and related accessories, etc.**
- **Fabrication of ducts in accordance with SMACNA / DW 142 standard and to install as per ASHRAE standard.**
- **Specialized systems viz: Smoke Management Systems , Staircase Pressurization system, 24x7 Monitoring system, etc. The installation team has been trained to take care of specific noise / vibration control measures prior to erection of any equipment viz: Chillers, Pumps, Air Handling Units, Fan Coil Units, Extract Fans, etc.**
- **Air balancing / water balancing prior to final testing and commissioning activities**



# **MANGEMENT STAFFS**

## **MANAGEMENT & ADMINISTRATION**

1. Mr. Ahmed : General Manger
2. Mr. Thomson : Project Manager ( Civil )
3. Mr. Joy : Project Manager ( MEP)
4. Mr. Gulzar Jafri : Project Engineer ( MEP )
5. Mr. Husain : Head of Accounts

## **ESTIMATION DEPARTMENT**

1. Mr. Numan : Estimation Manager
2. Mr. James Mascarenhas : Estimation Engineer ( MEP )

## **PROJET PLANNING & CONTROL**

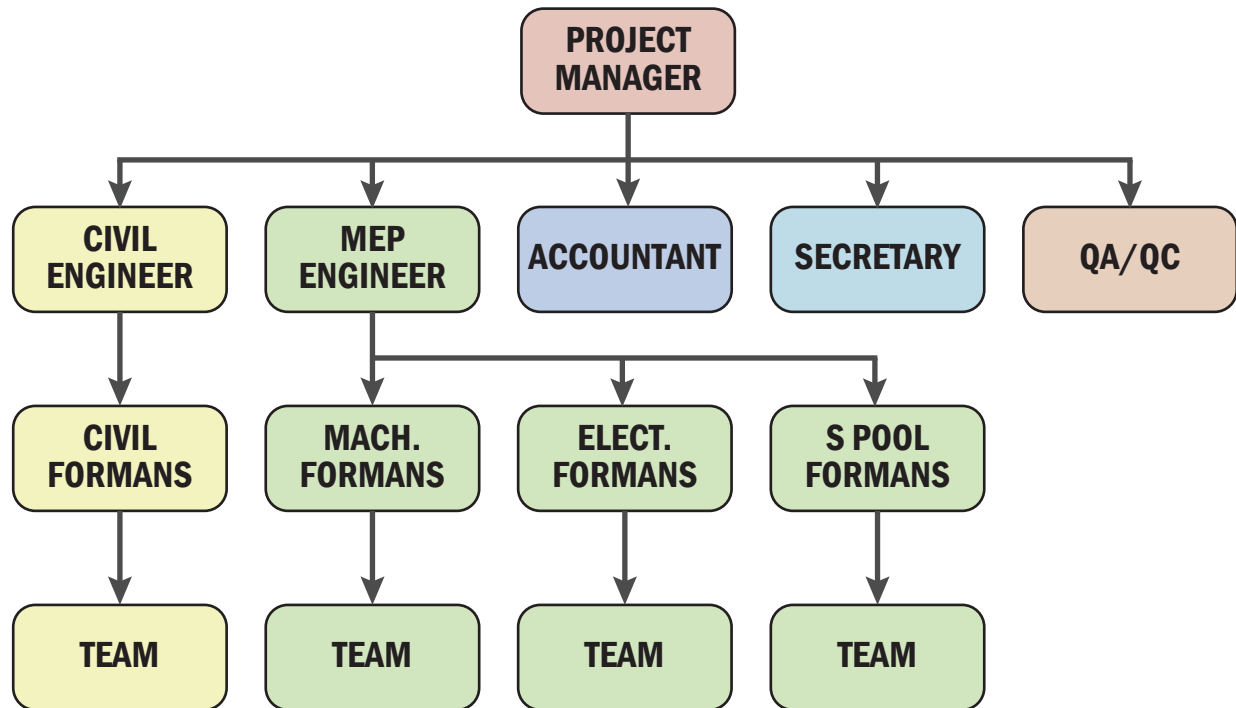
- Mr. Haridas : Planning and Cost Control

## **MAINTENANCE DIVISION**

- Mr. George Varghese : Maintenance Engineer  
(Swimming pool, Lakes, Water features )



# ORGANIZATION CHART (OPERATION TEAM)







# MAJOR CLIENTS

## ENGINEERING OFFICE

JAFZA

EMRILL

NAKEEL

DUBAI PROPERTIES

ROTANA HOTELS

EMIRTAES

DAMAC

DIRE





# **MAJOR PROJECTS COMPLETED**

**QAFAYA ISLAND LAKES**

**DUBAI RULER HUNTING OFFICE**

**LISAILI STABLE**

**ZABEEL PALACE EXPANSION**

**UM AL QUWAIN SALE CENTRE**

**WATBA STABLE**

**GODOLPIN STABLE**

**DUBAI CARGO VILLAGE**

**NESTLE WATERS FACTORY H & O LLC , TECHNO PARK, JEBEL ALI,**

**NEW AL ZAHARA HOSPITAL DUBAI, U.A.E**

**FOURTUNATO DEVELOPMENT AT JUMEIRAH VILLAGE ,DUBAI ,UAE**

**ABU DHABI CENTRAL MARKET ABU DHABI, U.A.E**

**RITZ CARLTON PROJECT ,DIFC , DUBAI,**

**DUBAI SPORTS CITY**

**AL BARARI 304 VILLA DEVELOPMENT**



# **CONTROL TEK, MAIN OFFICE**

**CONTROL TEK,  
ASPECT TOWERS,  
BUSINESS BAY,  
DUBAI, UAE.**

**P.O. Box 126264**

**Tel: + 971 4 3856962**

**Fax: + 971 4 3856963**